

Whitehaven Vickery Extension Project
Community Consultative Committee

Date: 25 July 2024

Venue: WHC Boardroom, Gunnedah Conadilly Street, Gunnedah, 2380 and Zoom

Attendees	
<p>Gunnedah Shire Council</p> <p>Wade Hudson (WH), Manager Development Assessment</p> <p>Cr Colleen Fuller (CF), Councillor and community member representative</p> <p>Rob Hooke (RH) Deputy Mayor Councillor</p>	<p>Whitehaven Coal</p> <p>Megan Martin, Environmental Superintendent (MM)</p> <p>Jabin De Keizer, Manager Community Relations (JDK)</p> <p>Matthew Sparkes, Manager Operations (MS)</p> <p>Independent Chairperson</p> <p>Professor Roberta Ryan (RR)</p> <p>Minute taker</p> <p>Kate Robinson</p>
<p>Apologies</p> <p>Barry Thompson, Community Representative</p> <p>Grant McIlveen, Community Representative</p> <p>Keith Blanch, Community Representative</p> <p>Ron Fuller, Community Representative</p> <p>Donna Ausling, Narrabri Shire Council</p> <p>Michelle Henry, Narrabri Shire Council</p> <p>Cr Cathy Redding, Narrabri Shire Council</p> <p>Cr Darrell Tiemens, Narrabri Shire Council</p>	

Item	Description	Action
1	Welcome, agenda, apologies, declarations - RR	
	<p>No new interests declared.</p> <p>Minutes from previous meeting approved.</p>	
2	Actions arising	
	<p>1. Update on rail corridor plans and timing.</p> <p>To the question from the previous CCC meeting regarding the design of the rail, MM says it is as per the EIS. The next round of plans puts detail to that design.</p> <p>By way of update more broadly, MM says that related information on the traffic management plan and water management plan reported earlier in the meeting in the project update are relevant to the construction of the rail corridor. Mod 1 has changes that pertain to next steps including a batch plant so that concrete can be made onsite.</p> <p>MM says TfNSW has issued a design certificate for the Kamilaroi Highway bridge, which is the rail over the road. There has also been negotiations with the local land services and Crown Lands about the alternative travelling stock route, which needs to be in place before closing Braymont Road.</p> <p>An ARTC major works licence agreement has been executed, and the ARTC connection to the mainline is being finalised in the coming weeks.</p> <p>The 32KV line elevation above the rail spurs is a Transgrid asset and Vickery has to negotiate with them to raise the line above the rails. Additional power lines will also need to be moved. The designs are complete and with Essential Energy for review.</p> <p>The modification plan presented at the last CCC meeting is being submitted to DPHI mid-August before going on exhibition. MM will advise RR when it goes on exhibition.</p> <p>Vickery has completed the flood study, and it will be available shortly on the website. The study determined that they meet the flood planning criteria with the design including the rail spurs. MM says the report provides more detail.</p>	<p>MM to advise RR when modification plan is on exhibition and the flood study is available on the website. RR to share information with stakeholders.</p>

	<p>RR asks about whether the grid survey conducted in March was related to Whitehaven’s activity around the corridor works.</p> <p>MM responds that it was not part of this work.</p> <p>2. Clarification on behalf of Gunnedah and Narrabri Shire Councils regarding the Glentarkie facility in Boggabri.</p> <p>RR says she followed up on the query, and that CCC members will have read the information that was shared. She has also spoken to Grant.</p>	
3	Environmental report - MM	
	<p>MM presents the Environmental Report (see attached report).</p> <p><u>Noise</u></p> <p>MM says they have installed a new real time noise monitor located to the west of the mine to help ensure that the real time noise protocol is effective.</p> <p>WH asks if there is any obligation about proximity of the monitor to the operating area.</p> <p>MM replies that there is no obligation. She adds that this is their internal monitoring. Each month they have an acoustic engineer who undertakes the compliance monitoring. The real time monitoring is additional to requirements and designed to provide indicative monitoring so that any necessary adjustments can be made if operations are at risk of exceedance.</p> <p>RH asks if the additional monitoring was on the designated sites or if they moved around.</p> <p>MM says they are moved around explaining noise is not linear. She adds that operations are currently well inside the noise criteria.</p> <p><u>Dust</u></p> <p>MM provides a briefing on dust monitoring noting that levels from deposited dust gauge results are from Canyon and SSD-5000 project approval conditions. Levels under 4 grams/m² per month (rolling annual average) is considered compliant dust, and that the operation has achieved that.</p>	

	<p>WH queries that there is one point where it reaches 6.3. Is this monitor closer to the site?</p> <p>MM replies that the rolling annual average is 3.3. The higher level is due to agricultural impacts especially given the dry winter last year.</p> <p><u>Water</u></p> <p>MM provides a briefing on water monitoring noting stable ground water levels. She says that in the last quarter Vickery has been mining close to the water table and from this point on they will be monitoring within the water table.</p> <p>MM says the water quality is variable. They drilled two additional bores in January/February between the mine and the Namoi in the north-west, and monitoring has found that salt levels are very high – approximately 20,000.</p> <p>RH asks what depth the bores are. MM replies that it varies but they generally hit water at 15-18m depending on the location.</p> <p>WH asks if it is known why the saline levels are so high. MM replies that high levels are known in the area. Water quality around Braymont Road is known to be low. She explains that many of the original triggers are being surpassed by a lot of the bores, and after investigation, they have found these are the natural levels. The triggers will be reconfigured in the next 12-18 months to be specific to each bore.</p> <p>RH asks for clarity on what they are looking for in the monitoring ie. water quality and / or variability in its depth?</p> <p>MM confirms they are looking for both at each quarterly monitoring event.</p>	
4	Project / approvals update and next steps	
	<p>MS presents a project update (see attached report). 10.9M bcm of overburden and 143kt ROM coal mined in FY24, total workforce now at 142 people including 103 operators. Safety performance strong with a TRIFR reflective of that.</p>	
5	Community update	
	<p>JDK presents a community update (see attached report).</p> <p>RH asks if there is a set budget for a certain period which you then distribute?</p>	

	<p>JDK says that funding is derived from different channels including \$200,000 overseen by the Community Investment Committee. Whitehaven Coal also has long-term partnerships in place e.g. Westpac Rescue Helicopter, Country Education Fund. Additionally, they also have discretionary funds available and are approached by community organisations for support. These are considered on a case-by-case basis.</p> <p>RH asks if the funding requests from community organisations go to the board.</p> <p>JDK confirms that this occurs sometimes, but that most items do not go to the board and are made on a discretionary basis.</p> <p>CF asks how the Little Wings project is going.</p> <p>JDK says that it is progressing very well, and that people are accessing the service.</p> <p>RR asks about the community funding process.</p> <p>JDK says for the Community Investment Committee the process is approximately 2-3 months from submission to evaluation. Applications are always open for discretionary funding. He says that Whitehaven is about to release financial year sustainability report, which will include community support which totals more than \$1.3m. This is similar to the previous year and they are aiming to maintain this level. They are currently putting together the 2025-2026 budget.</p>	
6	General Business	
	<p>MM raises the CCC meeting location. Vickery is happy to provide the town office boardroom but wanted to see if anyone had other preferences.</p> <p>General discussion among meeting attendees who are happy to stay at the current location noting the importance of having an online option for people who can't attend in person.</p> <p>MM also raises whether there is a need for additional / proactive recruitment of community CCC members.</p> <p>CF notes that everyone is time poor. The local Probus and Senior Citizens have closed because they were not able to get volunteers.</p> <p>RH concerned by the lack of community representation at this meeting. He encourages MM to try to get more members.</p> <p>MM queries the limits under the DPHI CCC guidelines.</p>	

<p>RR says there is a process, and that the guidelines have recently been updated. She shares the latest update here.</p> <p>RR says the main issue is sourcing people. She agrees that an ad in the paper is a good idea. She emphasises that contacts and relationships are the best ways to recruit community members, and encourages current CCC members to tap into their networks.</p> <p>MM says that the meeting works best with more community members.</p> <p>RH says Whitehaven is at an exciting pinnacle stage in redevelopment and expansion, and that this could be used to generate interest in joining.</p> <p>RR says she will follow up with MM regarding recruitment of community members.</p> <p>MM raises that under the new CCC guidelines, a list of members is needed on the website. The list on their website had members' mobiles which she wasn't sure was appropriate.</p> <p>RR says it is up to members. It is important that people can contact members and either mobile or email is fine. She says some create an email address for this purpose. However, not everyone uses email and mobile is better for some.</p> <p>CF says she has no issue having her mobile number available. She says it is good for transparency.</p> <p>RH reports he is also happy to have his mobile number publicly available.</p> <p>RR says that the minutes need to go up promptly for the community and other stakeholders.</p> <p>MM says she doesn't publish the minutes on the website until they have been accepted. She is happy to publish when issued following the meeting with a non-endorsed or draft caveat.</p> <p>RR says any amendments can be noted and made at the next meeting.</p> <p>RH says it was helpful to have Vickery's reports circulated before the meeting.</p> <p>Next meeting date: October 24</p>	<p>RR to meet with MM to discuss community member recruitment.</p> <p>RR to follow up with community members regarding having their mobile number available on the CCC webpage.</p>
--	---

Attachment A:

Whitehaven Community Update
Presentation Slides – July 2024

Vickery Coal Mine Community Consultative Committee Meeting #19

Quarterly Environmental Monitoring Report
Apr, 2024 – Jun, 2024



Vickery Project

This report has been prepared for the Community Consultative Committee (CCC) meeting to show Environmental monitoring performance at Vickery Coal Mine (VCM) for the reporting period from April 2024 to June 2024.

Noise Monitoring

Attended noise was conducted during this period.

Attended noise monitoring was conducted at “Lanreef” (N-AT2) and “Broadwater” (N-AT1) properties once a month during this reporting period. Noise criteria for the mine is 40dB(A) Leq (15 min) during day time and 35dB(A) Leq (15 min) during evening/night time. Please refer to EPL Monitoring locations map in Appendix B for the location of these monitoring points.

Results below show that noise emissions from the mine did not exceed operational criteria at “Lanreef” or “Broadwater” monitoring locations during the monitoring period.

Table 1 April 2024 Attended Noise Monitoring

Table 4 VCM Operational Noise Monitoring Results Leq(15min) – 22 nd & 23 rd April 2024 (Day)								
Location	Time	dB(A), Leq	VCM Contribution dB(A),Leq	Criterion dB(A),Leq	Wind speed (m/s),dir	Stability Class	Identified Noise Sources dB(A),Leq	Exceedance (Yes/No)
N-AT1 / 7	3:21pm	34	31	45 ¹	3.5 / 124	C	VCM (31) , traffic (31), insects (21)	No
N-AT2 / 8	9:21am	40	IA	40	1.6 / 141	B	Traffic (40), birds (26), VCM (IA)	No
Table 5 VCM Operational Noise Monitoring Results Leq(15min) – 22 nd April 2024 (Evening)								
Location	Time	dB(A), Leq	VCM Contribution dB(A),Leq	Criterion dB(A),Leq	Wind speed (m/s),dir	Stability Class	Identified Noise Sources dB(A),Leq	Exceedance (Yes/No)
N-AT1 / 7	7:07pm	36	34	35	2.3 / 121	E	VCM (34) , insects (32)	No
N-AT2 / 8	9:27pm	44	22	37	2.3 / 132	E	Traffic (44), VCM (22) , insects (22)	No
Table 6 VCM Operational Noise Monitoring Results Leq(15min) – 22 nd & 23 rd April 2024 (Night)								
Location	Time	dB(A), Leq	VCM Contribution dB(A),Leq	Criterion dB(A),Leq	Wind speed (m/s),dir	Stability Class	Identified Noise Sources dB(A),Leq	Exceedance (Yes/No)
N-AT1 / 7	12:10am	35	33	35	2.6 / 125	D	VCM (33) , frogs (29), insects (26)	No
N-AT2 / 8	10:00pm	43	25	37	1.9 / 141	E	Traffic (43), VCM (25) , frogs (20)	No
Table 7 VCM Operational Noise Monitoring Results LA _{max} – 22 nd & 23 rd April 2024								
Location	Time	dB(A), LA _{max}	VCM Contribution dB(A), LA _{max}	Criterion dB(A), LA _{max}	Wind speed (m/s),dir	Stability Class	LA _{max} Noise Source	Exceedance (Yes/No)
N-AT1 / 7	12:10am	62	38	52	2.6 / 125	D	Insects	No
N-AT2 / 8	10:00pm	57	30	52	1.9 / 141	E	Car	No

Table 2 May 2024 Attended Noise Monitoring
Table 4
VCM Operational Noise Monitoring Results Leq(15min) – 18th May 2024 (Day)

Location	Time	dB(A), Leq	VCM Contribution dB(A),Leq	Criterion dB(A),Leq	Wind speed (m/s),dir	Stability Class	Identified Noise Sources dB(A),Leq	Exceedance (Yes/No)
N-AT1 / 7	10:02am	33	21	45 ¹	3.6 / 165	C	Birds (33), VCM (21)	No
N-AT2 / 8	12:11pm	51	IA	45 ¹	6.3 / 171	D	Traffic (51), wind in trees (33), birds (26), VCM (IA)	No

Table 5
VCM Operational Noise Monitoring Results Leq(15min) – 17th May 2024 (Evening)

Location	Time	dB(A), Leq	VCM Contribution dB(A),Leq	Criterion dB(A),Leq	Wind speed (m/s),dir	Stability Class	Identified Noise Sources dB(A),Leq	Exceedance (Yes/No)
N-AT1 / 7	9:26pm	32	28	35	0.6 / 112	E	Traffic (29), VCM (28) , insects (22)	No
N-AT2 / 8	8:19pm	47	IA	37	1.9 / 307	D	Traffic (47), insects (23), VCM (IA)	No

Table 6
VCM Operational Noise Monitoring Results Leq(15min) – 17th & 18th May 2024 (Night)

Location	Time	dB(A), Leq	VCM Contribution dB(A),Leq	Criterion dB(A),Leq	Wind speed (m/s),dir	Stability Class	Identified Noise Sources dB(A),Leq	Exceedance (Yes/No)
N-AT1 / 7	12:20am	28	23	35	2.5 / 308	E	Birds (26), VCM (23)	No
N-AT2 / 8	10:40pm	46	IA	37	1.8 / 316	E	Traffic (46), VCM (IA)	No

Table 7
VCM Operational Noise Monitoring Results LA_{max} – 17th & 18th May 2024

Location	Time	dB(A), LA _{max}	VCM Contribution dB(A), LA _{max}	Criterion dB(A), LA _{max}	Wind speed (m/s),dir	Stability Class	LA _{max} Noise Source	Exceedance (Yes/No)
N-AT1 / 7	12:20am	55	27	52	2.5 / 308	E	Bird	No
N-AT2 / 8	10:40pm	62	IA	52	1.8 / 316	E	Car	No

Table 3 June 2024 Attended Noise Monitoring

Table 4								
VCM Operational Noise Monitoring Results Leq(15min) – 17 th & 18 th June 2024 (Day)								
Location	Time	dB(A), Leq	VCM Contribution dB(A),Leq	Criterion dB(A),Leq	Wind speed (m/s),dir	Stability Class	Identified Noise Sources dB(A),Leq	Exceedance (Yes/No)
N-AT1 / 7	10:05am	32	IA	40	1.9 / 274	B	Traffic (30), aeroplane (25), birds (23), VCM (IA)	No
N-AT2 / 8	2:45pm	45	IA	40	.8 / 242	C	Traffic (44), residential (38), birds (24), VCM (IA)	No
Table 5								
VCM Operational Noise Monitoring Results Leq(15min) – 17 th June 2024 (Evening)								
Location	Time	dB(A), Leq	VCM Contribution dB(A),Leq	Criterion dB(A),Leq	Wind speed (m/s),dir	Stability Class	Identified Noise Sources dB(A),Leq	Exceedance (Yes/No)
N-AT1 / 7	8:16pm	29	IA	35	1.8 / 281	E	Traffic (28), insects (21), VCM (IA)	No
N-AT2 / 8	9:23pm	42	IA	37	2.5 / 325	E	Traffic (42), dog (22), VCM (IA)	No
Table 6								
VCM Operational Noise Monitoring Results Leq(15min) – 17 th June 2024 (Night)								
Location	Time	dB(A), Leq	VCM Contribution dB(A),Leq	Criterion dB(A),Leq	Wind speed (m/s),dir	Stability Class	Identified Noise Sources dB(A),Leq	Exceedance (Yes/No)
N-AT1 / 7	11:41pm	26	IA	40 ¹	3.3 / 298	E	Traffic (25), birds (20), VCM (IA)	No
N-AT2 / 8	10:00pm	34	IA	42 ¹	3.1 / 268	E	Traffic (34), horses (24), VCM (IA)	No
Table 7								
VCM Operational Noise Monitoring Results LA _{max} – 17 th June 2024								
Location	Time	dB(A), LA _{max}	VCM Contribution dB(A), LA _{max}	Criterion dB(A), LA _{max}	Wind speed (m/s),dir	Stability Class	LA _{max} Noise Source	Exceedance (Yes/No)
N-AT1 / 7	11:41pm	43	IA	57 ¹	3.3 / 298	E	Traffic	No
N-AT2 / 8	10:00pm	50	IA	57 ¹	3.1 / 268	E	Traffic	No

The real time noise monitor located on the “Long Way Round” property remains a management tool so the noise criteria are not applicable at that site. Levels of noise recorded at that location are managed according to the noise management plan and trigger action response plan.

Blast Monitoring

Blasting Results

There has been 8 Blasts at VCM from 1st April to 30th June.

The highest recorded overpressure for the reporting period was 107.90dBL recorded at B-02 compliance monitor on the 07/05/2024.

The highest recorded ground vibration for the reporting period was 0.81mm/s at B-02 recorded on the 26/04/2024.

VCM overpressure and ground vibration for the quarter was compliant and did not exceed the blasting criteria declared in the project approval and Blast Management Plan (BMP). Please refer to EPL Monitoring locations map in Appendix B for the location of these monitoring points.

Table 4 Max Peak Overpressure and Ground Pressure for the Quarter

Monitor Location	Date	Max. Peak Overpressure (dB)	Criterion (dB)	Date	Max. Peak Ground Pressure (mm/s)	Criterion (mm/s)
B-01	10/05/2024	102.9	133	26/04/2024	0.35	10
B-02	07/05/2024	107.9	N/A	26/04/2024	0.81	80
B-03	10/05/2024	95.6	120	13/05/2024	0.32	10

Air Quality Monitoring

Dust Deposition Results

Standard Australia AS/NZS 3580.10.1:2016, "Methods for sampling and analysis of ambient air – Determination of particulate matter – Deposited matter – Gravimetric Method," classifies deposited dust as insoluble solids. Therefore, VCM tests air quality monthly at mine-owned sites for indicative purposes, to infer compliance, against the limit of 4 g/m²/month.

Table 5 shows deposited dust gauge results over 12 months. All dust monitors that are located on project related or WHC owned land; as such compliance criteria (4g/m²/month) do not apply. While deposited dust trends remain steady during the reporting period (refer graph in *Appendix A*), some monitors are displaying non-mine related particulate matter deposition more regularly than others. Non-mine related particulate matter could be attributed to organic matter (such as leaves, mice, frogs, insects or bird faeces that fall in to the bottles), or they may be in farming locations, so during some months dust levels may be higher due to harvesting. Please refer to Dust Deposition Gauges Monitoring locations map in Appendix B for the location of these monitoring points.

Table 5 Deposited Gauge Results [g/m²/month]

Month	D1	D2	D12	D13B	DG1	DG2	V1	V2	V3	V4	V5
<i>Jul-23</i>	1.4	1.2	3.4	0.8	3.7	1.7	0.8	6.3	3.3	1.5	1.5
<i>Aug-23</i>	1.6	1.3	3.4	0.9	3.7	1.7	0.9	6.2	3.1	1.4	1.6
<i>Sep-23</i>	1.5	1.3	3.3	0.8	3.7	1.4	0.8	4.6	2.9	1.3	1.5
<i>Oct-23</i>	1.6	1.3	3.3	0.9	2.5	1.5	1.3	4.5	2.8	1.5	1.6
<i>Nov-23</i>	1.7	1.5	2.6	1.0	1.4	1.6	1.3	4.4	2.6	1.4	1.5
<i>Dec-23</i>	2.0	1.5	2.5	1.1	1.6	1.5	1.3	4.3	2.2	1.6	1.4
<i>Jan-24</i>	2.1	1.4	2.7	1.2	2.5	2.1	1.4	4.4	1.4	1.9	1.5
<i>Feb-24</i>	2.4	1.7	1.8	1.2	2.8	2.6	1.4	0.8	1.3	1.9	1.7
<i>Mar-24</i>	2.5	1.7	1.7	1.4	2.9	2.5	1.4	1.0	1.4	2.2	1.9
<i>Apr-24</i>	2.7	1.6	1.8	1.5	3.0	2.6	1.5	1.0	1.3	2.2	1.9
<i>May-24</i>	2.5	1.5	2.0	1.5	3.0	2.7	1.5	1.0	1.4	2.3	2.0
<i>Jun-24</i>	2.4	1.4	1.9	1.6	2.8	2.5	1.3	0.9	1.3	2.2	2.0
Average	2.0	1.5	2.5	1.2	2.8	2.0	1.2	3.3	2.1	1.8	1.7

Real-time Air Monitoring (PM_{2.5} and PM₁₀)

Two real-time air quality monitoring units are located on private property adjacent to the Vickery Coal Mine. PM1 is located at Lanreef and PM2 at Mirrabinda to the south and south-west of the operations. These are used as both a compliance and an operational management tool. Dust levels nearing or reaching the nominated criteria will trigger actions onsite to assess the source of dust and modify operations if it is determined to be related to Vickery operations. Additional air quality monitoring units are located at Wil-gai and Roseberry and these are used for additional information and operational management in accordance with the Vickery Air Quality Management Plan. These units are also associated with other regional operations at Tarrawonga and Rocglen. Please refer to Air Quality Monitoring locations map in Appendix B for the location of these monitoring points.



Figure 1: TEOM and blast monitor installed at Lanreef

Water Monitoring

Groundwater

Routine groundwater monitoring has been conducted 6 monthly since 2021. In October 2023, Hydra-sleeve monitoring was introduced to Vickery’s groundwater bores. Appendix C contains the Hydrographs for Vickery’s GW bores. Monitoring indicates stable GW levels. Water quality data in a few bores is showing a departure from the interim trigger levels. This will assist to inform the development of the final trigger levels for GW monitoring as described in the Water MP. As mining below the water table has only just begun to occur any triggers of the interim TARP are due to the background levels naturally being different to the generic triggers sourced from external benchmarks. Please refer to Groundwater Monitoring locations map in Appendix B for the location of these monitoring points.

Surface Water

Water storage onsite is expected to be sufficient for at least 12 months. VCM has not undertaken any discharges during the period. Please refer to EPL Monitoring locations map in Appendix B for the location of these monitoring points.

Table 6 Surface Water Results for April, May & June

April	Namoi DS 1	Namoi DS 2	Namoi DS 3	Namoi US
pH	8.24	8.25	8.55	8.60
Temperature (°C)	18.5	18.7	20.6	20.0

Electrical Conductivity (µS/cm)	581	593	564	557
Turbidity (NTU)	21.6	13.6	28.1	21.5
Oil & Grease (mg/L)	<5	<5	<5	<5
May	Namoi DS 1	Namoi DS 2	Namoi DS 3	Namoi US
pH	8.22	8.24	8.25	8.24
Temperature (°C)	13.8	14.2	14.8	13.0
Electrical Conductivity (µS/cm)	980	950	968	964
Turbidity (NTU)	7.5	5.5	6.5	9.3
Oil & Grease (mg/L)	<5	<5	<5	<5
June	Namoi DS 1	Namoi DS 2	Namoi DS 3	Namoi US
pH	7.91	7.72	7.85	7.86
Temperature (°C)	10.4	11.1	11.8	11.3
Electrical Conductivity (µS/cm)	732	714	755	737
Turbidity (NTU)	56.9	47.1	27.4	16.2
Oil & Grease (mg/L)	<5	6	<5	<5

April	SD1	Canyon Void	Vickery Void
pH	8.28	8.66	8.7
Electrical Conductivity (µS/cm)	478	4620	1830
TSS	34	8	24
Oil & Grease (mg/L)	<5	<5	<5

VCM has recorded 243 mm of rain for 2024, so far.

Table 7 Annual Rainfall

	Jan	Feb	Mar	Apr	May	Jun	Jul	Aug	Sep	Oct	Nov	Dec	Total
Monthly Rain (mm)	29.6	34.4	5	80.4	29.8	63.8							243
Cumulative (mm)	29.6	64	69	149.4	179.2	243							

Clearing

Clearing is currently ongoing at Vickery, approximately 500ha have been cleared during FY24. Topsoil and Subsoil is being stored separately in designated stockpiles areas. The stockpiles will be ripped and seeded to maintain viability for rehabilitation.



Figure 2: Updated Image of Topsoil and Subsoil Stockpiles

Complaints

One complaint received during the reporting period.

Complainant advised Environmental Superintendent that their car windscreen had been damaged by material from road haulage and that they found a piece of coal on the road surface.

Approvals

The last Environmental Protection Licence (EPL) Variation was received on the 7th December 2023.

An application to transfer this licence to another WHC owned entity will be submitted in the following quarter. This is for internal WHC administrative purposes. The new holding entity will be named 'Vickery Coal Operations Pty Ltd'.

Environmental Management Plans

Approvals

All the approved Management Plans are available on the WHC website.

The Traffic Management Plan has been updated to include amended haulage hours following Tarrawonga Coal Mine's approval of MOD10 to MP11_0047. This was submitted in June and is with the DPHI for review.

MOD1 is planned to be submitted in August 2024. As described in April 2024 at the last CCC meeting this Modification is to:

- amend the Blue Vale Road realignment to a lesser impact;
- to allow the export of gravel from the VEP in line with existing approvals at Tarrawonga and the original Vickery Coal Project (SSD-5000);
- Construction and use of water pipelines from additional existing groundwater bores and to the Rocglen Coal Mine;
- Potential relinquishment of the secondary infrastructure area;
- A temporary access road and additional soil stockpile area;
- Temporary concrete batching plant;
- Disposal of waste heavy vehicle tyres;
- Reduction to the open cut extent and improved waste rock emplacement and landform design;
- Extended ROM coal road haulage hours to align with the Tarrawonga Modification 10; and
- Schedule of Lands update.

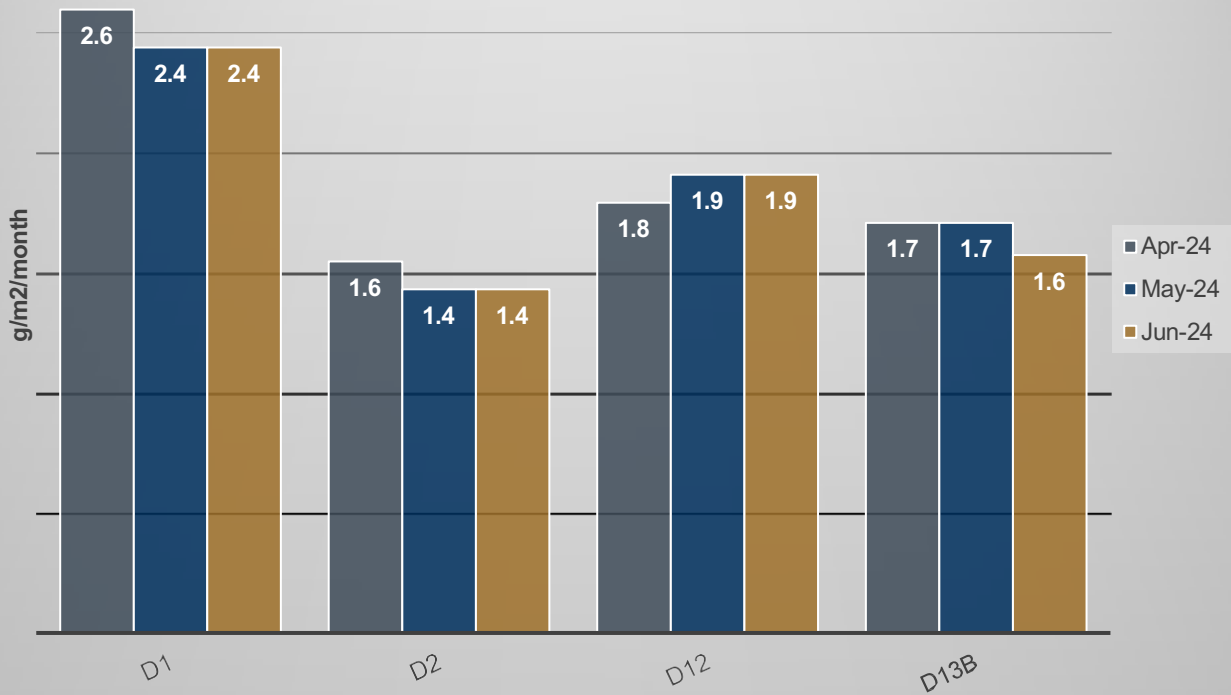
Proposed amendments

The Noise Management Plan will be updated to reflect the amended monitoring locations and incorporate road noise monitoring conducted by Tarrawonga Coal Mine on the haulage route.

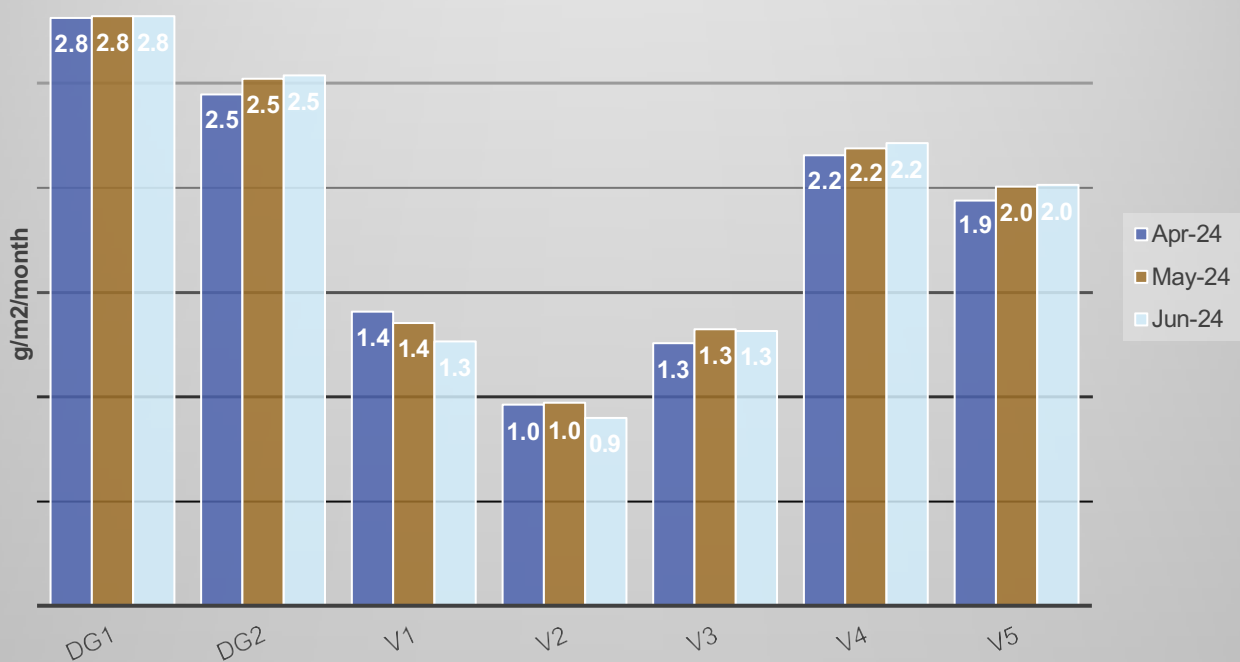
The Water Management Plan will be reviewed and updated to document the implemented groundwater monitoring regime and also to describe the construction of the rail spur and CHPP.

Appendix A

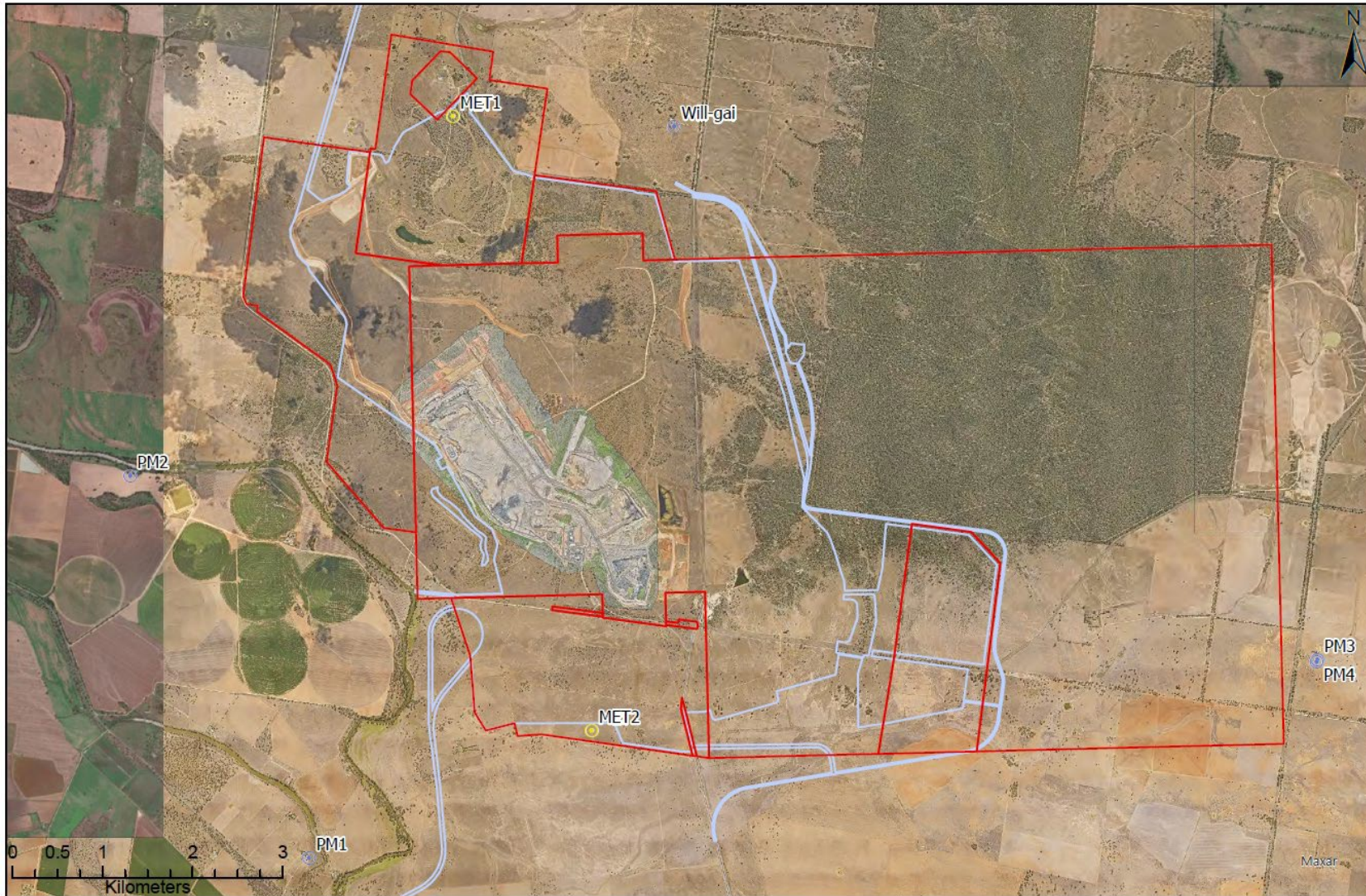
DDG Results - Quaterly rolling average [g/m2/month]



DDG Results - Quaterly rolling avergae [g/m2/month]



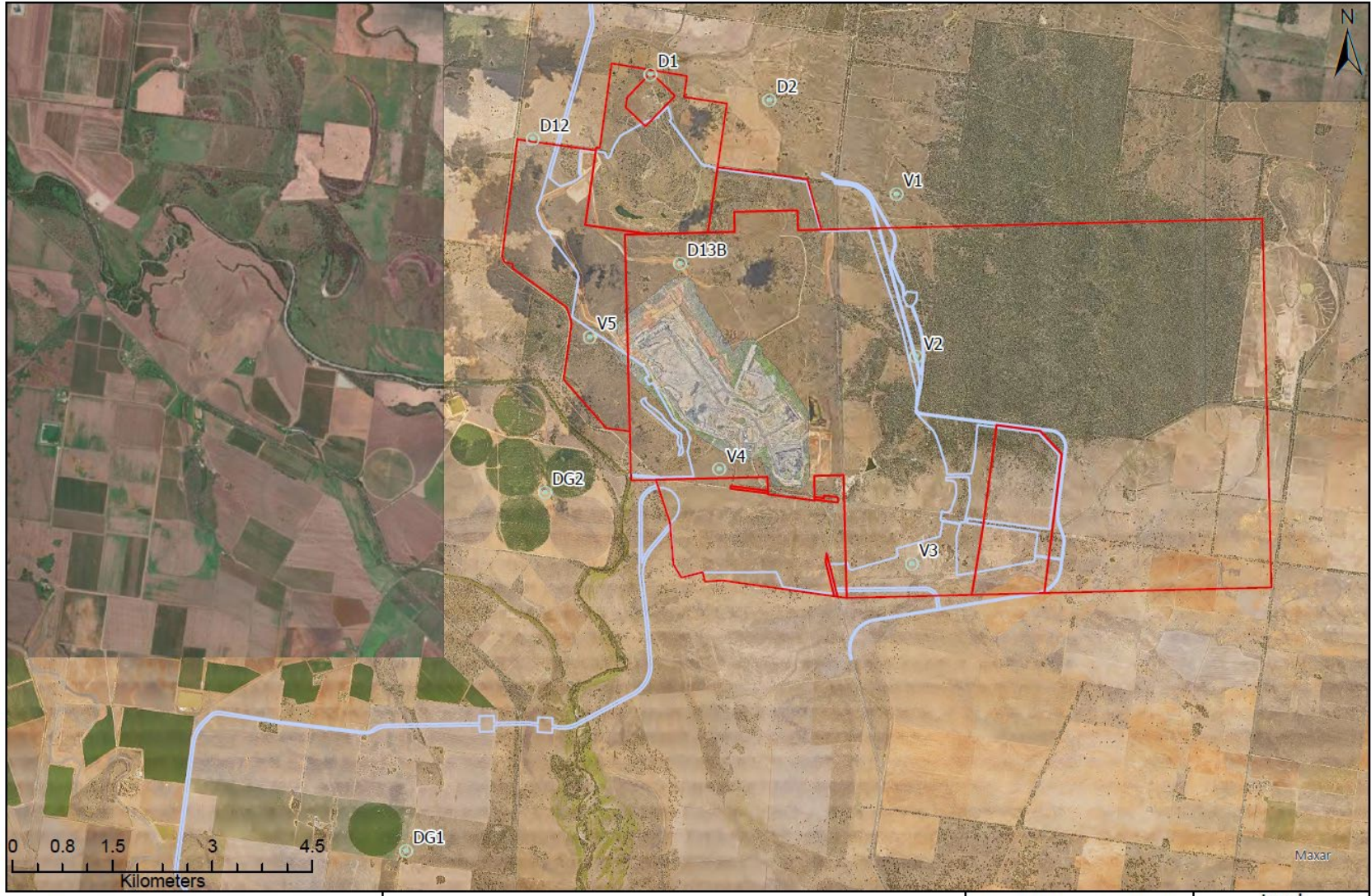
Appendix B



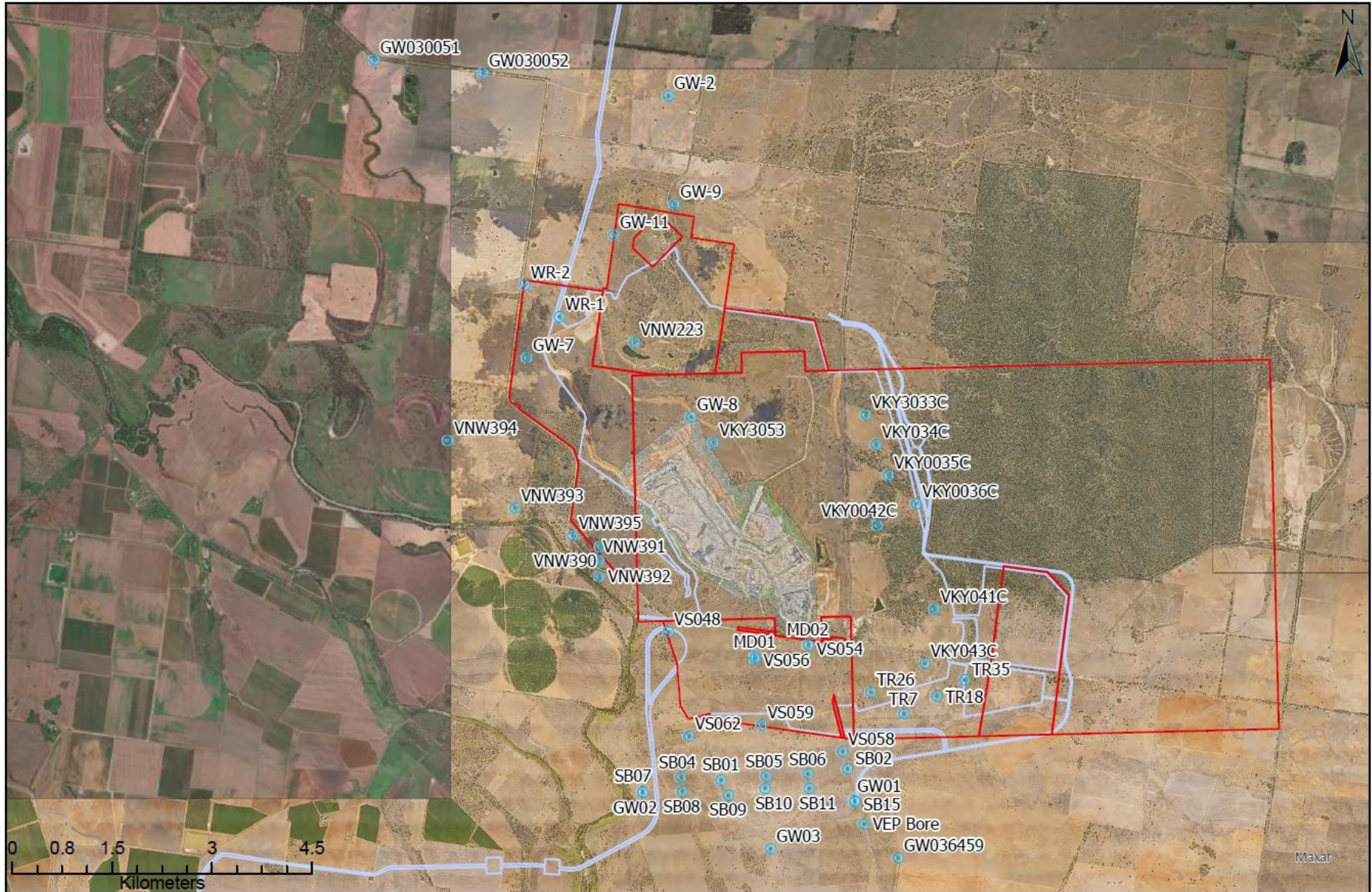
Air Quality Monitoring Locations

Date: May 2024 Scale: 1:52,000
 MGA Zone 56 Author: A. Quiroz

Legend	
	MET Station
	Air Quality Monitoring
	Mining Lease
	Approved Disturbance Area



Dust Deposition Gauges Monitoring Locations



Ground Water Monitoring Locations



**Vickery Coal Mine
EPL Monitoring Locations**

Date: Sept 2023
MGA Zone 56
Scale: 1:68,000
Author: A. Quiroz



Appendix C

